

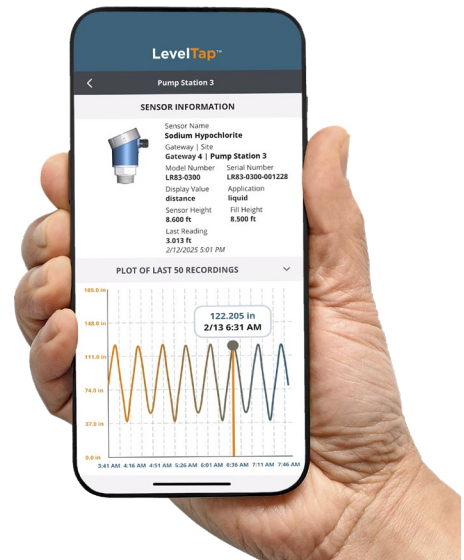
# LevelHub® HB01

Wireless Battery Powered Tank Level Monitor



## Application

The LevelHub wireless, battery-powered remote tank level monitoring gateway enables users to easily record, transmit, and view tank or silo data from a phone or browser, while sending alerts for high and low levels to keep stakeholders informed. The gateway periodically wakes to collect data via Bluetooth from up to four EchoBeam 80-GHz radar level sensors. Data is transmitted over the T-Mobile LTE-M network in the US and Canada or Vodafone in the EU and UK to Flowline's secure AWS cloud server, where it can be accessed through the LevelTap mobile App or the LevelHub.io website. Configuration is easy via the App or website, allowing users to grant view-only access to team members, set scan and transmission intervals, and enable SMS, email, or push notification alerts. Data is exportable in CSV, JSON or API formats, and site locations can be viewed on a geomap.



## Features

- Transmits level, location, alerts and battery status
- Configured via LevelTap App or levelhub.io website
- Adjustable data scanning and transmission intervals
- Robust lithium battery lasts up to 8 years in service
- Secure data transmission with end-to-end encryption
- Easy to install, configure and run within 15 minutes
- Rugged PBT enclosure rated IP67 for industrial use

## Benefits

What's the cost of running out of chemicals, having full tanks awaiting pick-up, making inefficient truck deliveries or pick-ups, or expediting the above to your company, customers and suppliers? What if you could reliably measure, easily setup and securely share level data where and when it's needed with field and office stakeholders? Now you can with EchoBeam sensors, LevelHub gateways and the LevelTap App.

## Battery

Battery life is determined by the configured scan and transmit intervals as well as the LTE-M signal quality. For example with good signal quality, in factory default (where the gateway awakens to scan for data every 15 minutes and transmit data every 6 hours), the battery life is 5+ years. Thus changing the scan or transmit intervals, will decrease or increase the battery life. See the battery life chart on the next page.



# LevelHub<sup>®</sup> HB01

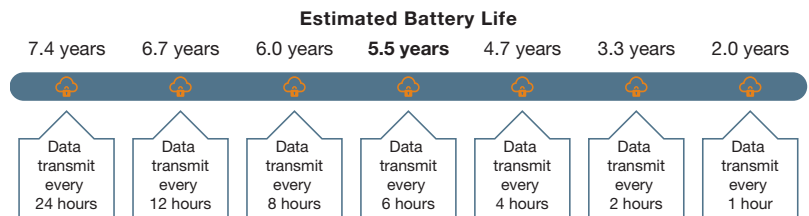
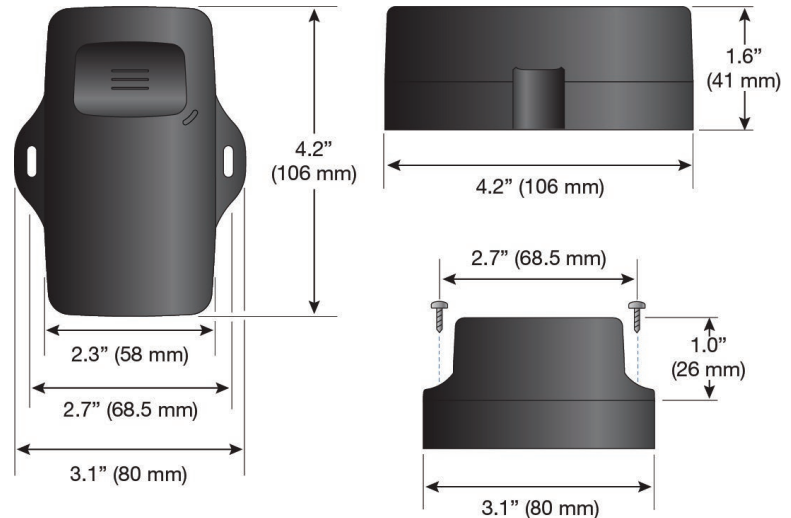
Wireless Battery Powered Tank Level Monitor



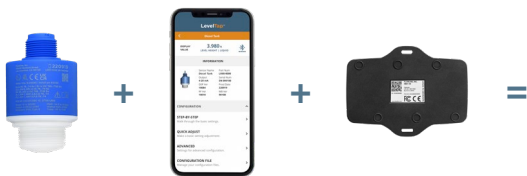
## Specifications

<b>Wireless comm.:</b>	Standard: CAT-NB2/CAT-M1 (Aka NB-IoT og LTE-M), BLE 5.x LTE-band: B2, B3, B8, B12, B20 software update over air (SUOTA) SIM-card: e-SIM
<b>Cellular networks:</b>	T-Mobile (US & Canada), Vodafone (EU & UK)
<b>GNSS positioning:</b>	GPS, GLONASS, Galileo, BeiDou
<b>Battery power:</b>	3.6V high power lithium manganese (Li-Mn) battery
<b>Est. battery life:</b>	Up to 8 years (based on 4 scans per hour & 1 transmit per day with good LTE-M signal quality)
<b>Data transmit:</b>	Level, location, alerts & battery status
<b>Configuration:</b>	LevelTap <sup>™</sup> App (iOS & Android)
<b>Browser interface:</b>	levelhub.io
<b>Data export:</b>	CSV, JSON, API formats
<b>Memory:</b>	Non-volatile
<b>Operating temp.:</b>	F: -22° to 176° C: -30° to 80°
<b>Enclosure rating:</b>	Type IP67
<b>Enclosure mat.:</b>	PBT (polybutylene terephthalate)
<b>Weight:</b>	8 oz (255 grams)
<b>Classification:</b>	General purpose
<b>Compliance:</b>	FCC, CE, RoHS, REACH

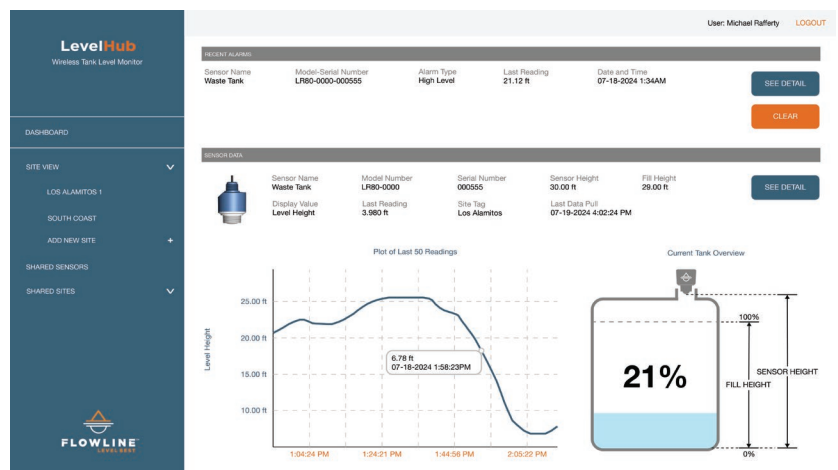
## Dimensions



## Configuration



Remote monitoring is easy. Download the LevelTap App, pair and configure your EchoBeam sensors. Scan the QR code on the back of LevelHub gateway, and add your first site through LevelTap. Then press the LevelHub power button and activate the data service by paying the subscription fee in LevelTap. Last, assign your EchoBeam sensors to LevelHub through LevelTap and you're done.



## Ordering

HB01-01 (1), (2)

## NOTES

- 1) LevelHub hardware is purchased through distribution and the service is purchased via credit card through the LevelTap App or levelhub.io.
- 2) Download the free LevelTap App at the Apple Store or Google Play, register, and then follow the instructions in the LevelHub manual.