

2.6.2 How to Make Connection (On Actuator Side, Gripper Type)

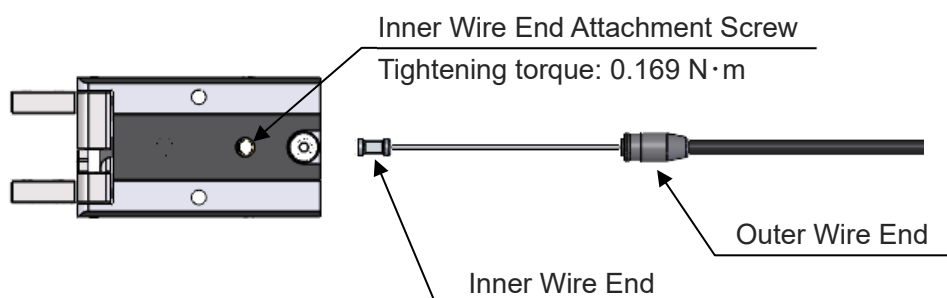
[1] Gripper type

◆ Preparation

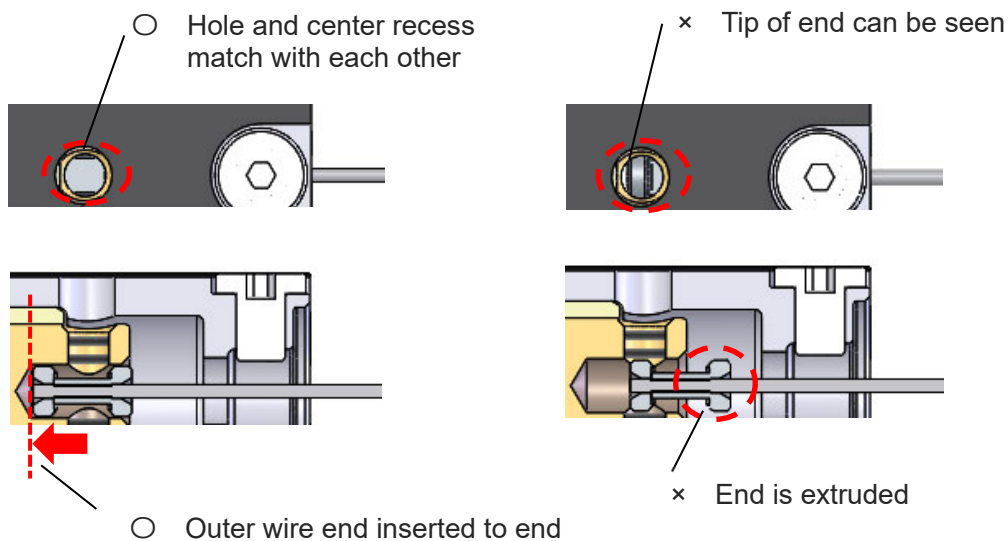
- Hex wrench (parallel faces: 1.5mm)

◆ Connection Procedures

1. Take off the inner wire end attachment screw. Insert the inner wire end straight from the hole on the bottom.

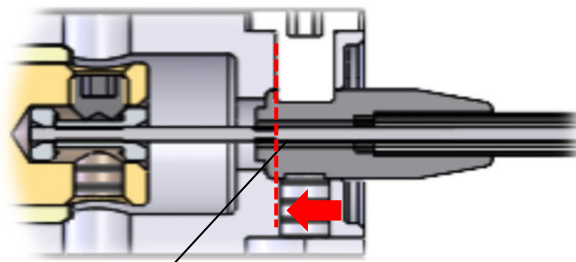
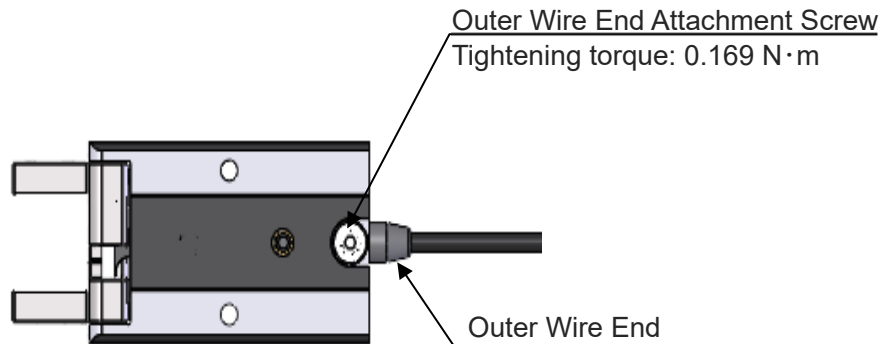


2. Confirm that the inner wire end is firmly inserted till the end of the hole. The position where the recess at the center of the inner wire end matches with the hole for the set screw should be the right position. With the inner wire end inserted to the end, tighten up the inner wire end attachment screw.



2.6 How to Install Control Wire (Enclosed in Actuator)

- Loosen the outer wire end attachment screw by approximately 1mm, insert the outer wire end at the wire attachment port on the bottom of the body till it reaches the end, and tighten the attachment screw.



Insert outer wire end till it reaches end of hole

2.6.3 How to Make Connection (On Actuator Side, Rod Type)

[1] Rod type

◆ Preparation

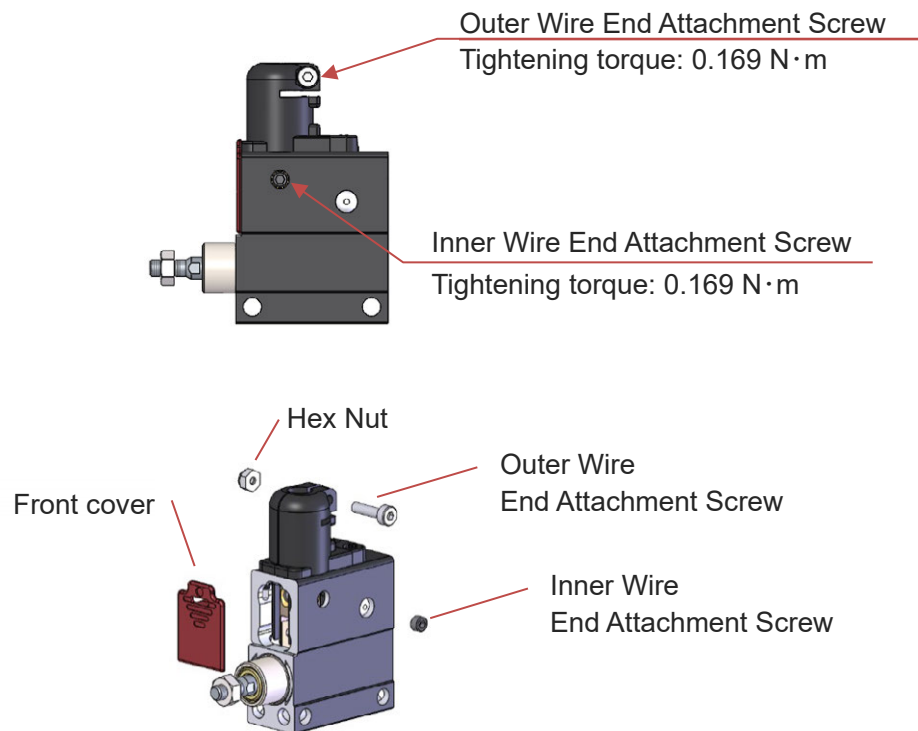
- Hex wrench (parallel faces: 1.5mm)

◆ Connection Procedures

1. Confirming Wire Attaching Orientation

The inner wire end attachment screw and the outer wire end attachment screw on delivery should be attached as shown in the figure below.

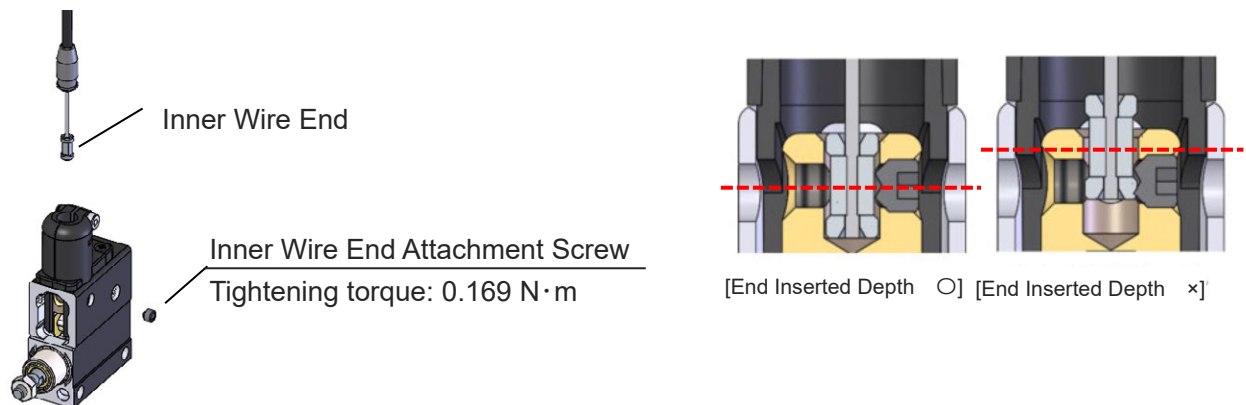
Adopting to the installation posture and installation surface of the rod type, the orientation of the inner wire end attachment screw can be changed. The outer wire end attachment screw can be changed to the opposite by swapping the screw and hex nut positions.



2. Take the front cover off. It can be taken off by hanging the snap features to the top of the front cover. Although this procedure is not mandatory, it makes a work to check the condition of the inner wire end insertion and installation.

2.6 How to Install Control Wire (Enclosed in Actuator)

3. Insert the inner wire end straight at the hole on the port and check if the inner wire end has reached the end of the hole. Confirm that the recess of the inner wire end is matched with the hole for the set screw as shown in the figure, and tighten it up with the inner wire end attachment screw.



4. Insert the outer wire end till it reaches the end of the hole on the port. Tighten up the outer wire end attachment screw.

