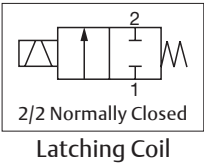
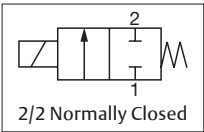


ASCO™ MINIATURE SOLENOID VALVES
 DIAPHRAGM SOLENOID FLUID ISOLATION VALVES

SERIES
038

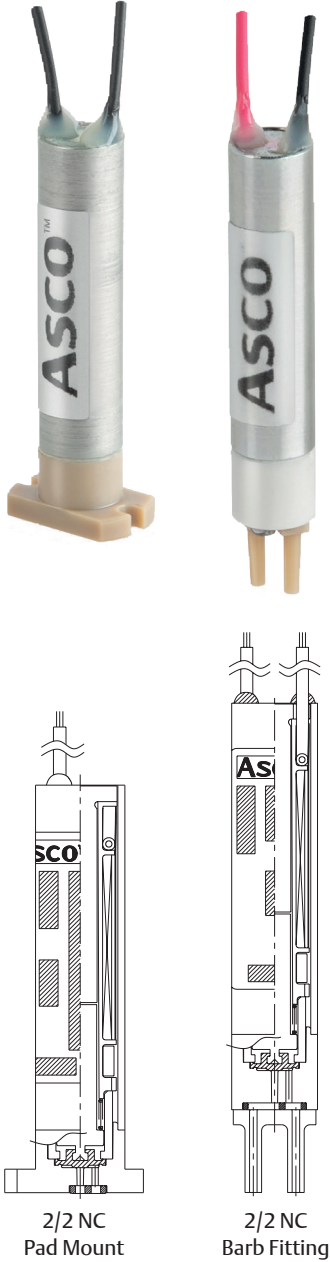
- Direct acting solenoid valve for use with neutral or aggressive liquids in analytical instruments
- Small profile and low internal volume well suited for dispensing applications and precise flow control
- Low power consumption results in less heat transfer to thermally sensitive reagents and samples
- Low dead volume improves ability to clean between each cycle
- Typical application include:
 - Clinical Diagnostics
 - DNA Sequencing
 - Immunoassay
 - Sample Preparation



| General Valve Information | |
|---------------------------|-----------------------------|
| Body | PPS, PEEK |
| Seals | FKM, FFKM |
| Response Time | < 10 ms |
| Internal Volume | 1.2 µl |
| Dead Volume | 0.75 µl |
| Max Viscosity | 20 cSt (mm ² /s) |

| Electrical Characteristics | |
|----------------------------|--|
| Coil Insulation Class | B (130°C [266°F]) |
| Connector | Lead Wires (see Electrical Connection) |
| Connector Specification | 32 AWG PVC coated |
| Standard Voltages* | 5 VDC, 12 VDC (±5%) |

*Other voltages on request



| Electrical Connection | Power Ratings | | | | Ambient Temperature Range C° (F°) | Coil Duty | Lead Color |
|---------------------------|---------------|---------|---|----------|--------------------------------------|------------------------|---|
| | Inrush | Holding | | Hot/Cold | | | |
| | VA | VA | W | W | | | |
| Standard Leaded Coil (L0) | - | - | - | 1.2 | 10 to 50 (50 to 122) | Intermittent, ED = 40% | Black |
| Latching Leaded Coil (L1) | - | - | - | 1.2 | | Intermittent, ED = 20% | Polarity: Red: Positive(+); Black: Negative (-) |

01100CB-2021-RO

Distributed by Valin Corporation | www.valin.com | (800) 774-5630 | customerservice@valin.com

ASCO™

Visit our website at Emerson.com/asco
 Availability, design and specifications are subject to change without notice. All rights reserved.



| Specifications | | | | | | | |
|------------------------------------|--------------|------------------|--------|------------------------------------|--------------------|-------------------|-----------------|
| Connection | Orifice Size | Flow Coefficient | | Pressure Differential bar (psi) | | | |
| | | | | min. | max. | Power Coil (W) | Catalog Number |
| | mm (inches) | Kv (m³/h) | Cv | | gas / liquids | | |
| 2/2 NC - Standard Leaded Coil (L0) | | | | | | | |
| Pad Mount | 0.4 (0.016) | 0.0017 | 0.0020 | 0 bar (0.0 psi) | 1.0 bar (14.5 psi) | 1.2 | R038A00XL0XXXXX |
| Hose Barb | 0.4 (0.016) | 0.0017 | 0.0020 | 0 bar (0.0 psi) | 1.0 bar (14.5 psi) | 1.2 | 6038A01XL0XXXXX |
| 2/2 NC - Latching Leaded Coil (L1) | | | | | | | |
| Pad Mount | 0.4 (0.016) | 0.0017 | 0.0020 | 0 bar (0.0 psi) | 1.0 bar (14.5 psi) | 1.2 | R03800XL1XXXXX |
| Hose Barb | 0.4 (0.016) | 0.0017 | 0.0020 | 0 bar (0.0 psi) | 1.0 bar (14.5 psi) | 1.2 | 603801XL1XXXXX |

How to Order

Connection Type

R = Pad Mount
6 = Barb Fitting

Product Series

038 = Analytical & Medical Liquid Isolation Valve

Revision

A = Initial Release

ITEM

| | Orifice | Body Material | Gasket Seal |
|-------|-------------|---------------|-------------|
| 001 | 0.4 (0.016) | PPS | A |
| 002 | 0.4 (0.016) | PEEK | A |
| 011 * | 0.4 (0.016) | PPS | None |
| 012 * | 0.4 (0.016) | PEEK | None |

* For Connection Type "6"

R 038 A 001 L0 V00 V1

Voltage

V1 = 24/DC Class B
V3 = 12/DC Class B
Z1 = 5/DC Class B

Seal Material

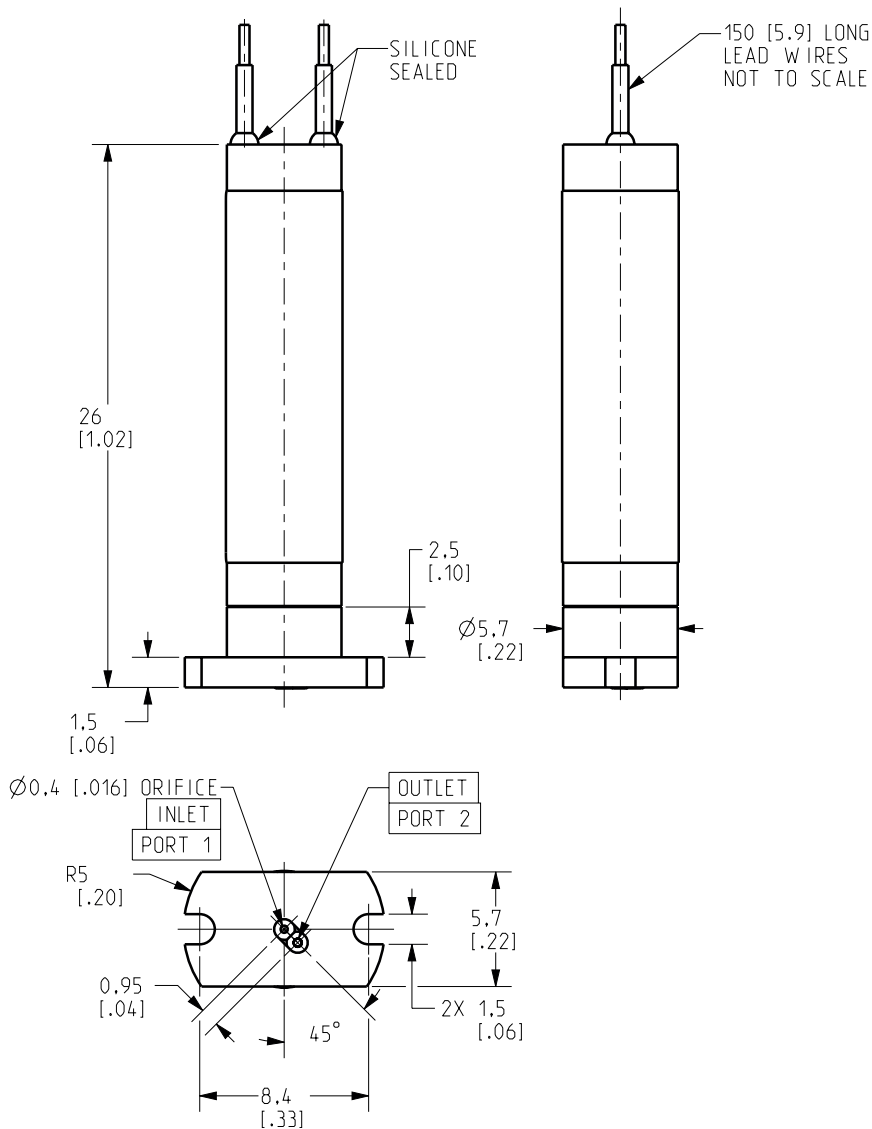
V00 = FKM
X00 = FFKM

Electrical Connection Type

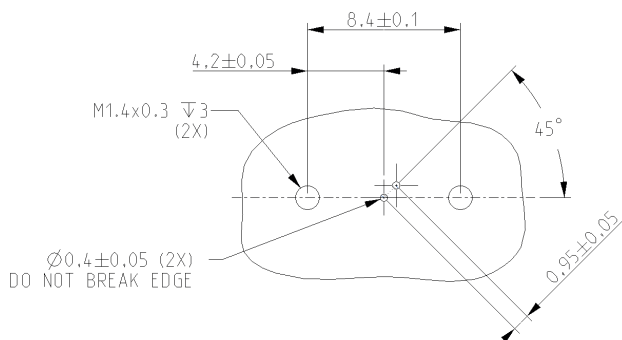
L0 = Leaded Coil
L1 = Leaded Coil (Latching)

Dimensions: mm (inches)

Connection Type R Pad Mount



Mounting Pattern for Pad Mount Solenoid Valve



Dimensions: mm (inches)

Connection Type 6
Hose Barb

